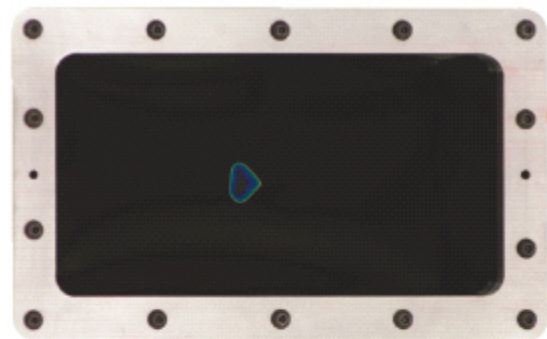
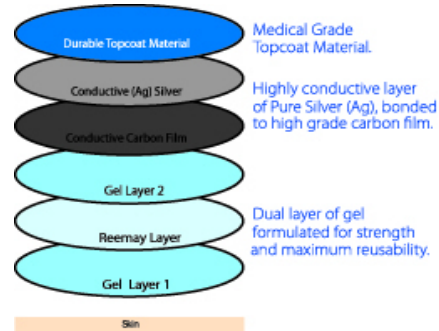


## For Medical Professionals Who care!

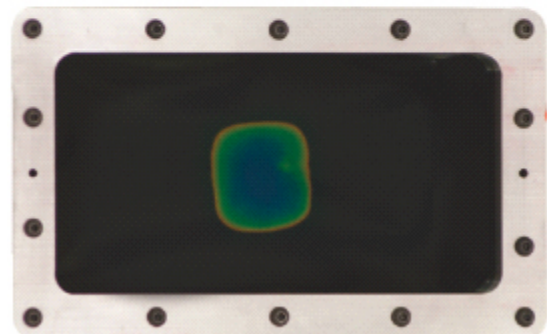
Pepin Manufacturing Inc., an ISO 13485 Certified, CE Mark Registered is a leading manufacturer with over 25 years experience in the electrotherapy market. PMI uses its technical knowledge to create the highest quality electrodes using only the best materials and most advanced processes.

### PMI Electrodes

- Uniquely designed Dual layer of adhesive hydrogel enhances the performance, offering ultimate patient comfort. Our premium hydrogel strengthens and increases the life of each electrode resulting in maximum reusability.
- A layer of Pure Silver (Ag) is uniquely bonded to a layer of conductive carbon film for reduced impedance, greater conductivity and uniform current dispersion. The combination of these high quality materials prevents "hot spots" to ensure patient comfort.
- Extra long 6" Lead Wires with tin coated copper strands for the lowest impedance on the market. A dispersive lug head helps to prevent wire pull-out.
- Available in Many Size and Shapes along with several choices of Flexible and Durable Topcoat Materials.
- Low Profile Design maximizes flexibility, allowing the electrode to conform to body contours.
- The AdvanTrode line of electrodes are manufactured with State-of-the-Art Computerized Technology to ensure precision and quality in every electrode.
- Made in the USA.



Current is concentrated in a small area, creating a "hot spot" that is less effective.



PMI electrodes are able to fully disperse the electrical current throughout the entire surface of the electrode.

### PMI Electrode Current Dispersion

- The unique manufacturing processes and material used in PMI electrodes provide a uniform current dispersion throughout the desired treatment site of picture each electrode. This uniform current dispersion

eliminates “hot spots” and provides the maximum treatment to the entire electrode surface.

- A leading brand electrode and a PMI electrode are placed on a “Current Dispersion Meter”. An electrical current is passed through each electrode for a period of 60 seconds. The electrical voltage output is identical for each electrode. Results are shown at right.
- The PMI electrode displays optimal current dispersion while the leading brand treats less than 50% of the surface, mainly where the wire is placed.

[Click here for more information about our Advantrode Electrodes](#)